

D O U B L E  
C H A R G E



8 0 0 X 1 6 0 0 M M

**WE  
ARE  
NOKEN**

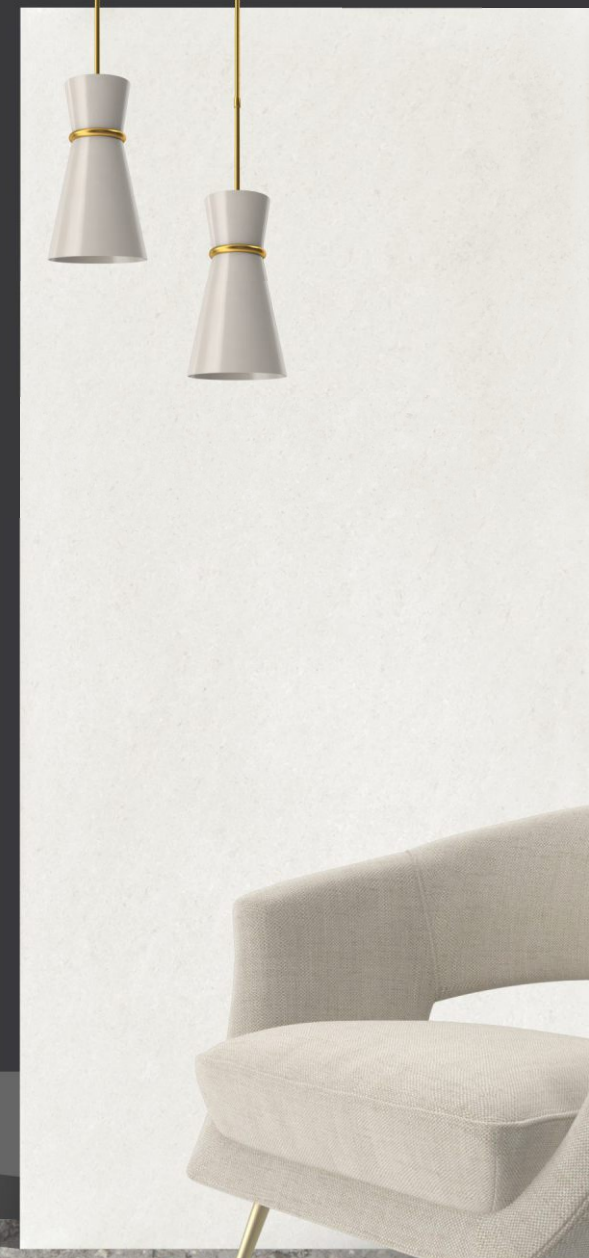
## A Brain That Unlocks **The Innovation**

Noken tiles, is a dynamic maneuver brought into existence with a clear proposition to deviate the unnecessary misconceptions that surround the ceramic world. The whole idea is to deliver good quality products that are easy to get and easy to apply. The high-end features too have made a room for themselves in these but the trouble that comes with them is totally absent in Noken tiles.

Over the years, remarkable changes have taken place in the technology used in the ceramic world and many have lost their track in the mid but Noken has hit the nail on the head in all regards as we have latest technological tools that are brought to function by the best of the working squad whereby all the individuals are talented and experienced.

The Noken family is all prepared to bring to you the best of the ceramic's luxury clubbed with confident stability. We assure you that we would be able to draft a long lasting equation.





**DC** DOUBLE  
CHARGE

800x  
1600mm

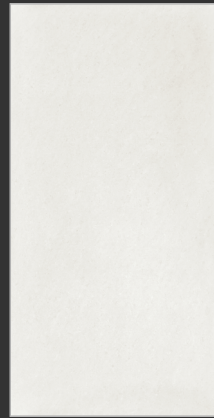
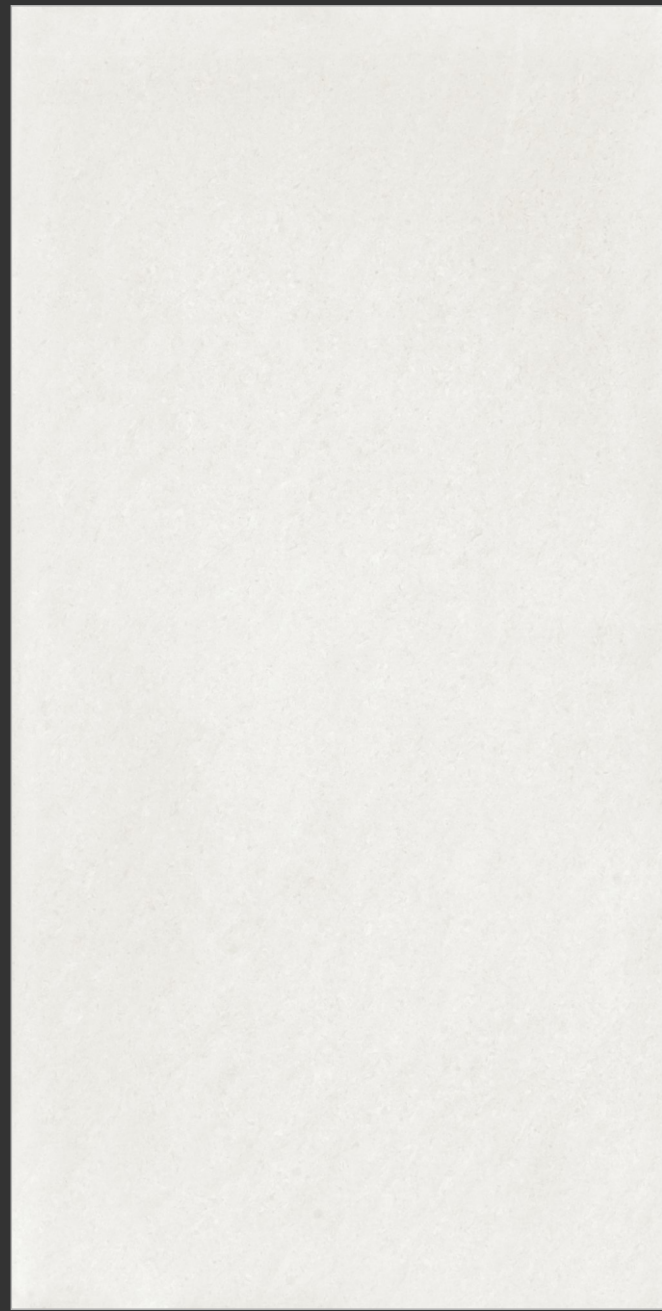
**DC** DOUBLE  
CHARGE



## A Unique Experience of Different Shades

Nature, technology, science and design. Top quality ceramic surfaces by Noken Tile are compact and impermeable, because they're made from pure minerals pressed and sintered at more than 1200°C. The best choice, for durability, safety, hygiene and beauty.

a goodwill  
of  
**excellence**  
and **class**



**ALFA MATRIX**

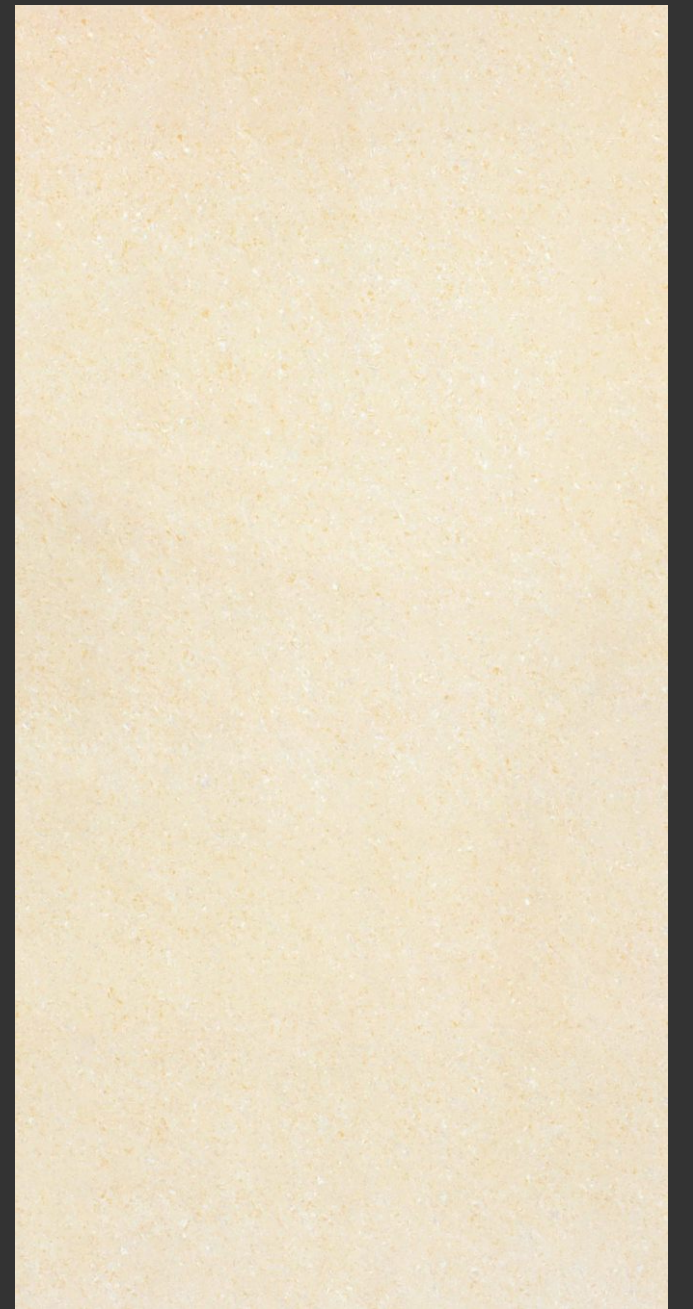
800x1600mm





DC DOUBLE  
CHARGE

NOKEN<sup>TM</sup>  
theTILE



**ALFA CREMA**  
800x1600mm





**REON ULTRA WHITE**

Italian Finish | 800x1600mm





**DC** DOUBLE  
CHARGE

**NOKEN**  
theTILE



**REON CREMA**

Italian Finish | 800x1600mm







**REON PEACH**

Italian Finish | 800x1600mm





**DC** DOUBLE  
CHARGE

**NOKEN**  
theTILE



**REON VERDE**

Italian Dark Finish | 800x1600mm





**REON BROWN**

Italian Dark Finish | 800x1600mm





**DC** DOUBLE  
CHARGE

**NOKEN**  
theTILE



**REON GREY**

Italian Dark Finish | 800x1600mm





**REON MERCURY**

Italian Dark Finish | 800x1600mm





DOUBLE CHARGE { 800X1600MM }

## TECHNICAL SPECIFICATIONS

CHARACTERISTICS			
DIMENSION & SURFACE QUALITY	INTERNATIONAL SPECIFICATIONS ISO 13006/EN 176 GROUP & IS 15622 : 2006	NOKEN VALUE	METHOD OF TESTING
Deviation In Length & Width	± 0.6%	± 0.1%	ISO 10545 Pt2
Deviation In thickness	± 5%	± 3%	ISO 10545 Pt2
Straightness of sides	± 0.5%	± 0.1%	ISO 10545 Pt2
Rectangularity	± 0.6%	± 0.2%	ISO 10545 Pt2
Surface Flatness	± 0.5%	± 0.2%	ISO 10545 Pt2
Glossiness	Gloss meter	min 90% Reflection	ISO 10545 Pt2
PHYSICAL & THERMAL PROPERTIES			
Water Absorption	< 0.5%	< 0.05%	ISO 10545 Pt3
Mohs Hardness	> 6	8	EN 101
Flexural Strength (Mor)	> 35N/m <sup>2</sup>	≥ 46 N/mm <sup>2</sup>	ISO 10545 Pt4
Surface Abrasion Resistance	< 175 mm <sup>3</sup>	< 145 mm <sup>3</sup>	ISO 10545 Pt6
Skid Resistance	> 0.4	> 0.4	ISO 10545 Pt17
Breaking Strength	1113 N	2800 N	ISO 10545 Pt4
Density (g/cc)	> 2	> 2.4	DIN 51082
Frost Resistance	Frost Proof	Frost Proof	ISO 10545 Pt12
Thermal Shock Resistance	No Damage	No Damage	ISO 10545 Pt9
Thermal Expansion	< 9 x 10 <sup>(-6)</sup>	< 6 X 10 <sup>(-6)</sup>	ISO 10545 Pt8
Moisture Expansion	Nil	Nil	ISO 10545 Pt10
CHEMICAL PROPERTIES			
Chemical Resistance	No Damage	No Damage	ISO 10545 Pt13
Colour Resistance	No Damage	No Damage	DIN 51094
Stain Resistance	Resistant	Resistant	ISO 10545 Pt14

\*Not applicable for glossy finishes

\*\* These parameters are not applicable for structured punches

## PACKING DETAILS

SIZE	NO. OF TILES PER BOX	COVERAGE AREA IN SQ. MT.	WEIGHT/BOX
800x1600mm	2 pcs.	2.56 sq.mt.	50-51 kg. Approx



## **NOKEN VITRIFIED PVT. LTD.**

Survey No. 204 P1/P3, 205 P1,

Village: Nichi Mandal, Morbi-Halvad Highway,

Morbi - 363 642, Gujarat, INDIA.

[nokenvitrified@gmail.com](mailto:nokenvitrified@gmail.com) | [info@nokenvitrified.in](mailto:info@nokenvitrified.in)

[www.nokenvitrified.in](http://www.nokenvitrified.in)